

# JASCO<sup>®</sup>

## PUMPS

~ SINCE 1988 ~

Reliable And Excellence Through Quality



PORTABLE SUBMERSIBLE PUMP

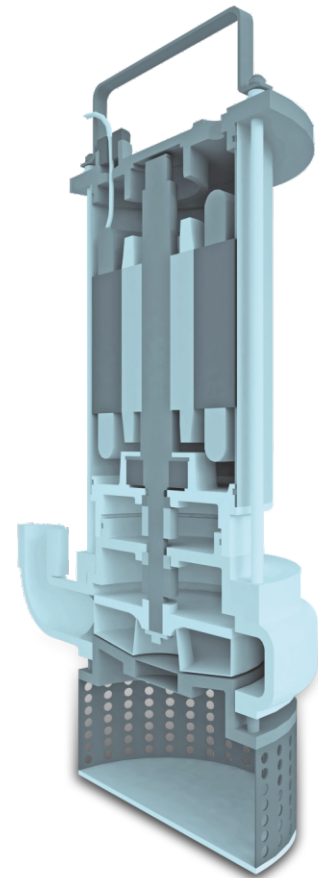


**JASCO** Portable submersible pumps are robust & sturdy in construction, computer aided design ensures most compact & efficient pump. It is designed for continuous operation. It is Portable, light in weight. Suction being at bottom, pump can draw water to the lowest level. Special anti corrosive process is carried out to wetted parts for longer life.

**JASCO** Portable submersible pump is driven by F class oil filled motor with IP 68 protection. This pump can be available in single phase or three phase version. Semi open, radial impeller is mounted on extended motor shaft. Motor winding is protected from pumping liquid by two Mechanical seals of adequate size & material, fitted in oil chamber. Thermister control, float arrangement can be provided optionally. Cutter arrangement & agitator can be provided optionally.

Motor body, Motor shaft & impeller shall be S.S., all Stationary parts like volute, oil chamber cover etc. shall be graded C.I. casting, winding shall be 'F' class insulated, cable shall be multicore cable with double seathing. Antifriction heavy duty ball bearings are provided at both upper & lower end of motor shaft. Stator & rotor are vacuum impregnated with heavy duty thermal varnish. Impeller & rotor are dynamically balanced for vibration free & noiseless operation.

Name Of Parts	Material	Qty.
Cable	CU + PVC	1
Bottom Plate	M.S.	1
Impller	CF - 8 M	1
Impller Lock Nut	S.S. 304	1
Strainer	S.S.	1
Spiral Plate	C.I. IS:210 FG:200	1
Impller Volute	C.I. IS:210 FG:200	1
Mechanical Seal	Tc Vs Tc & Sic Vs Sic	1 Set
'O' Ring	Nitrile Rubber	3
Oil Chamber	C.I. IS:210 FG:260	1
Upper / Lower Ball Bearing	S.S.	1+1
Pump Shaft	S.S. 410	1
Rotor Dia Cast	Sl. Steel + Allu. Dia Cast	1 Set
Stator Stamping	Sl. Steel	1 Set
Winding Wire Coil	Copper Wire	1 Set
Motor Body	S.S. 304	1
Stud	S.S. 410	2
Top Cover	C.I. IS:210 FG:260	1
Stud Lock Nut	S.S. 410	4
Handle	M.S.	1



\*We also provide special types of M.O.C. as per customer's requirement.

### APPLICATION

- Handling Industrial waste water
- Construction site & basement.
- Drainage of Reservoirs, Ditches & Trenches.
- Cleaning of man Hole
- Kitchen waste in Hotels.

### Technical Specification

- Head : up to 35m.
- Capacity : up to 150 m<sup>3</sup>/Hr
- H.P. : up to 2 Hp (SP)  
up to 15 Hp (TP)
- Solid Size : up to 20 mm.
- Speed : 1450/2900 rpm.

Note : Due to continuous R&D, M.O.C. & Design are subject to change without prior intimation.



## JASCO PUMP PVT. LTD.

📍 47, Phase -1, G.I.D.C., Naroda, Ahmedabad-382 330. (Guj.) INDIA.  
 ☎ (079) 2282 1240 / 2282 3422 📠 (079) 2282 3398  
 ✉ jascopump47@gmail.com // info@jascopump.com

