

JASCO[®]

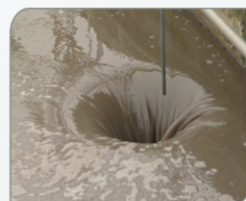
PUMPS

~ SINCE 1988 ~

Reliable And Excellence Through Quality



PORTABLE DEWATERING PUMP

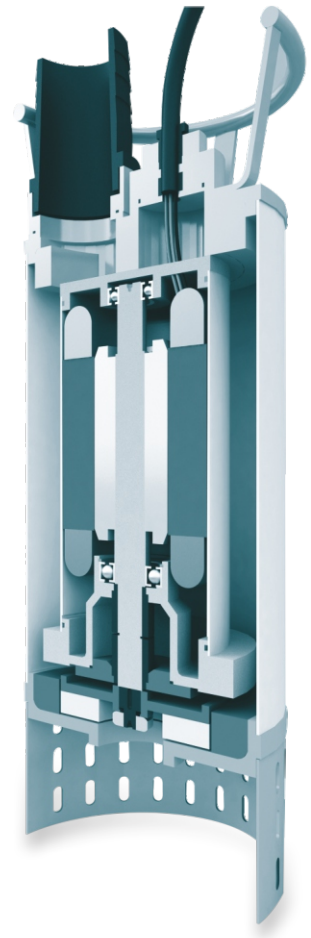


JASCO Portable Dewatering pumps are robust & sturdy in construction, computer aided design ensures most compact & efficient pump. It is designed for continuous operation. It is Portable, light in weight. Suction being at bottom, pump can draw water from the lowest level. Special anti corrosive process is carried out to wetted parts for longer life. It is having centre delivery at Top for vibration free operation. Motors having outside jacket of S.S. material is to ensure continuous waterflow on motor body to keep winding cool.

JASCO Portable Dewatering pump is driven by F class dry motor with IP 68 protection. This pump can be available in single phase or three phase version. Semi open, radial impeller is mounted on extended motor shaft. Motor winding is protected from pumping liquid by two Mechanical seals of adequate size & material. Thermister control, float arrangement can be provided optionally. Cutter arrangement & agitator can be provided optionally.

Motor body, Motor shaft & impeller shall be S.S., all Stationary parts like volute, Top cover, etc. shall be graded C.I. casting, winding shall be 'F' class insulated, cable shall be multicore cable with double seathing. Antifriction heavy duty ball bearings are provided at both upper & lower end of motor shaft. Stator & rotor are vacuum impregnated with heavy duty thermal varnish. Impeller & rotor are dynamically balanced for vibration free & noiseless operation.

Name Of Parts	Material	Qty.
Cable	CU + PVC	1
Handle	M.S.	1
Bottom Plate	M.S.	1
Impller	CF - 8 M	1
Impller Lock Nut	S.S. 304	1
Strainer	S.S.	1
Spiral Plate	C.I. IS:210 FG:200	1
Impller Volute	C.I. IS:210 FG:200	1
Mechanical Seal	Tc Vs Tc & Sic Vs Sic	1 Set
'O' Ring	Nitrile Rubber	3
Oil Chamber	C.I. IS:210 FG:260	1
Upper / Lower Ball Bearing	S.S.	1+1
Pump Shaft	S.S. 410	1
Rotor Dia Cast	Sl. Steel + Allu. Dia Cast	1 Set
Stator Stamping	Sl. Steel	1 Set
Winding Wire Coil	Copper Wire	1 Set
Motor Body	S.S. 304	1
Stud	S.S. 410	4
Outer Jacket	S.S.	1
Top Cover	C.I. IS:210 FG:260	1
Hose Flange	C.I. IS:210 FG:260	1
Hose Coller	C.I. IS:210 FG:260	1



*We also provide special types of M.O.C. as per customer's requirement.

APPLICATION

- Handling Industrial waste water
- Construction site & basement.
- Drainage of Reservoirs, Ditches & Trenches.
- Cleaning of man Hole
- Kitchen waste in Hotels.

Technical Specification

Head	: up to 35m.
Capacity	: up to 150 m ³ /Hr
H.P.	: up to 2 Hp (SP) up to 20 Hp (TP)
Solid Size	: up to 20 mm.
Speed	: 1450/2900 rpm.

Note : Due to continuos R&D, M.O.C. & Design are subject to change without prior intimation.



JASCO PUMP PVT. LTD.

📍 47, Phase -1, G.I.D.C., Naroda, Ahmedabad-382 330. (Guj.) INDIA.
 ☎ (079) 2282 1240 / 2282 3422 📠 (079) 2282 3398
 ✉ jascopump47@gmail.com // info@jascopump.com

